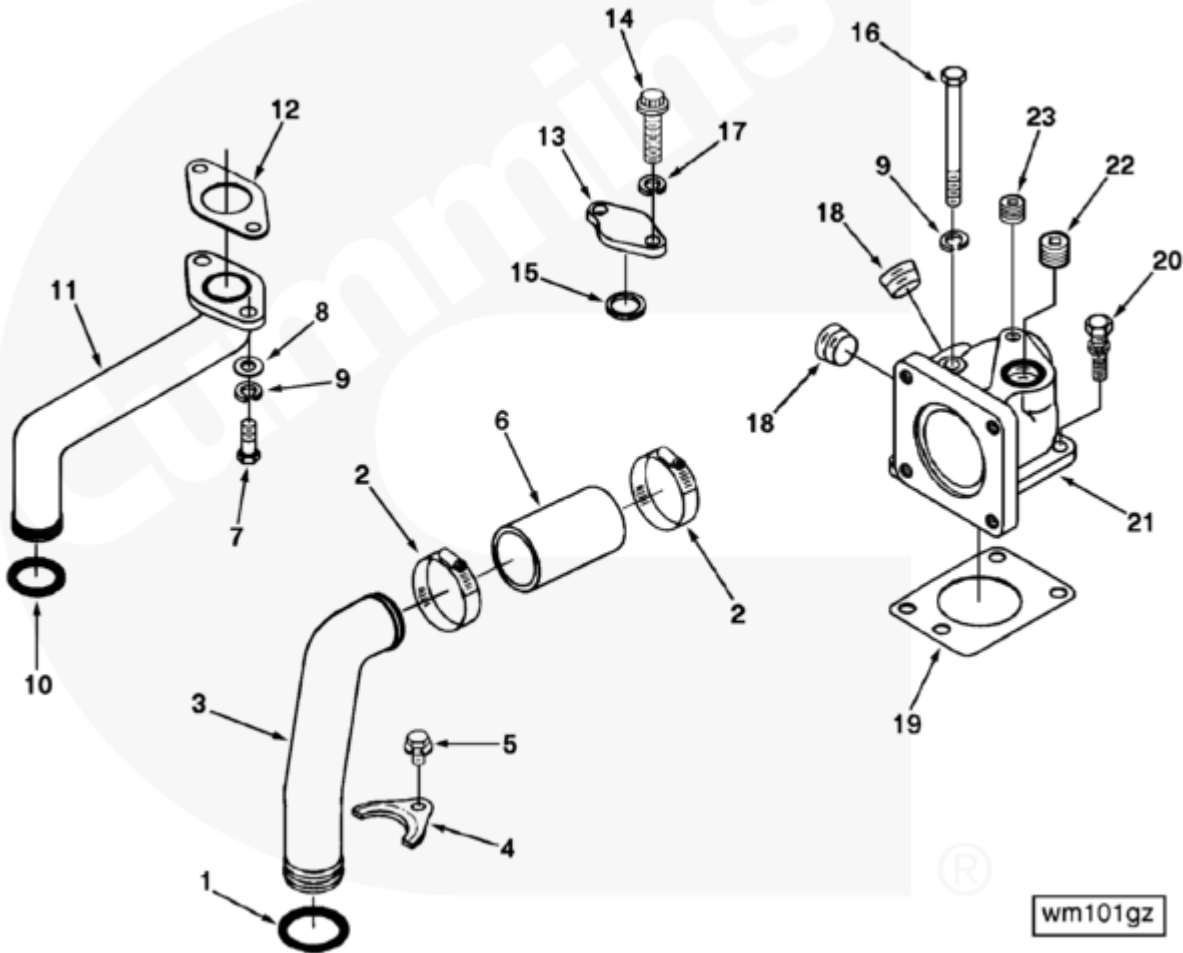




Parts Catalog - Option Detail

Electronic Parts Catalog - Option Detail				
Option	Group	Graphic	Film Card	Date
WM1054	08.06	wm101gz	F	15-JAN-93
Engines	NH/NT 855, NT495, NT743, NTA855 N106			

©Cummins Inc



[SMALL](#) | [MEDIUM](#) | [LARGE](#)

Cart	Ref No	Part Number	Part Description	Required	Remarks
<input type="button" value="View My Cart"/>					
		WM1054	Water Manifold		
					Water Manifold
					Components substituting for
					water manifolds on engines

					with water cooled (wet)
					exhaust manifold. Cannot be
					used with torque converter
					cooler. Requires the addition
					of a sub-option to provide
					rear water header cover. For
					use on non-aftercooled and
					aftercooled engines. For
					Brazil, use AR8866 in place
					of AR10032.
<input type="checkbox"/>	1	43463 A	O-Ring Seal	1	
<input type="checkbox"/>	2	3008690	Hose Clamp	2	1 3/4 - 2 1/4 in.
<input type="checkbox"/>	3	213485	Water Bypass Tube	1	
<input type="checkbox"/>	4	214617	Tube Clamp	1	
<input type="checkbox"/>	5	3022589	Captive Washer Cap Screw	1	5/16 - 18 X 5/8 in.
<input type="checkbox"/>	6	3071160	Plain Hose	1	
<input type="checkbox"/>	7	S 109	Hexagon Head Cap Screw	2	3/8 - 16 x 7/8 in.
<input type="checkbox"/>	8	S 602	Plain Washer	2	3/8 in.
<input type="checkbox"/>	9	S 604	Lock Washer	3	3/8 in.
<input type="checkbox"/>	10	212161	O-Ring Seal	1	
<input type="checkbox"/>	11	3009459	Water Transfer Connection	1	
<input type="checkbox"/>	12	3029032	Water Transfer Connection Gasket	1	
<input type="checkbox"/>	13	3009461	Cover Plate	6	
<input type="checkbox"/>	14	3074354	Twelve Point Cap Screw	12	3/8 - 16 X 3/4 in.
<input type="checkbox"/>	15	3024709	Rectangular Ring Seal	12	
<input type="checkbox"/>	16	S 199 A	Hexagon Head Cap Screw	1	3/8 - 16 x 4 in.
<input type="checkbox"/>	17	S 606 A	Lock Washer	12	3/8 in.
<input type="checkbox"/>	18	3008468	Pipe Plug	3	1/2 NPT.
<input type="checkbox"/>	19	3009457	Support Gasket	1	

<input type="checkbox"/>	20	3010595	Captive Washer Cap Screw	5	3/8 - 16 X 1 in.
<input type="checkbox"/>	21	3064209	Thermostat Housing Support	1	
<input type="checkbox"/>	22	3008469	Pipe Plug	1	3/4 NPT
<input type="checkbox"/>	23	3025458	Pipe Plug	1	1/8 NPT.

© 2019 Cummins Inc., Box 3005, Columbus, IN 47202-3005 U.S.A.
 Terms of Use and Disclaimers | Recommended System Requirements
 Need Assistance? Please click on the Contact Us button in the top right corner of any page.